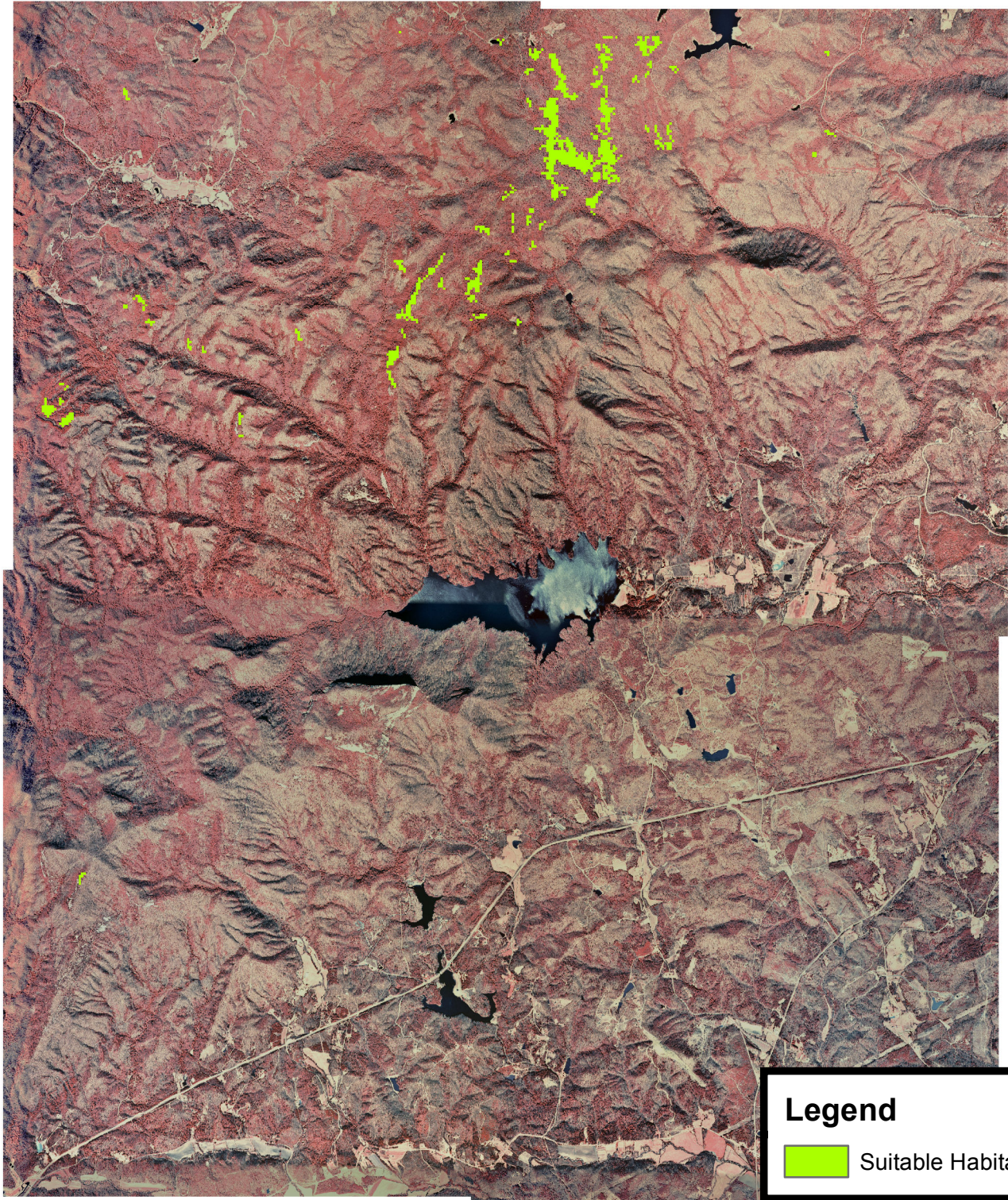


Habitat Suitability Analysis for a Rare Butterfly

Suitable habitat highlighted: areas above 900 meters and evergreen forest



Prepared by Carly Summers
October 3, 2011



Coordinate System: UTM Zone 17N NAD83

Data Source:

Land cover from U.S. MRLC
DEM from U.S. Geological Survey
Orthophoto from S.C. DNR

0 600 1,200 2,400 3,600 4,800
Meters