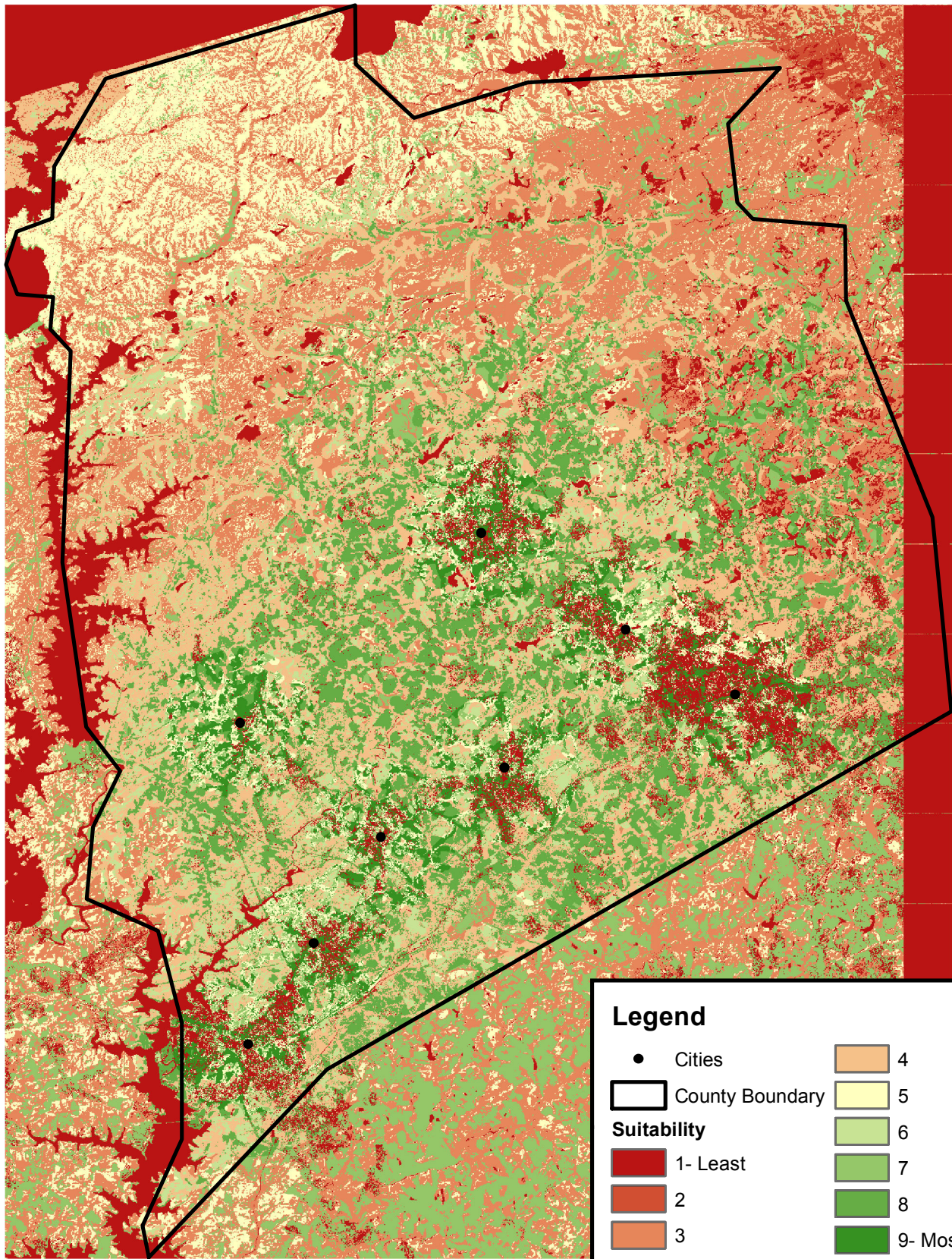


# Pickens County Bike Shop Suitability Analysis

A model with an emphasis on proximity to roads and cities and on suitable build sites



## Data Sources

Roads from U.S. Census Bureau

Land Cover from S.C. Department of Natural Resources

Pickens Cities from U.S. Census Bureau

Pickens Boundary from U.S. Census Bureau



Analysis coordinate system UTM Zone 17N NAD 1983

0 1.5 3 6 9 12 Kilometers

Prepared by Carly Summers  
October 24, 2011